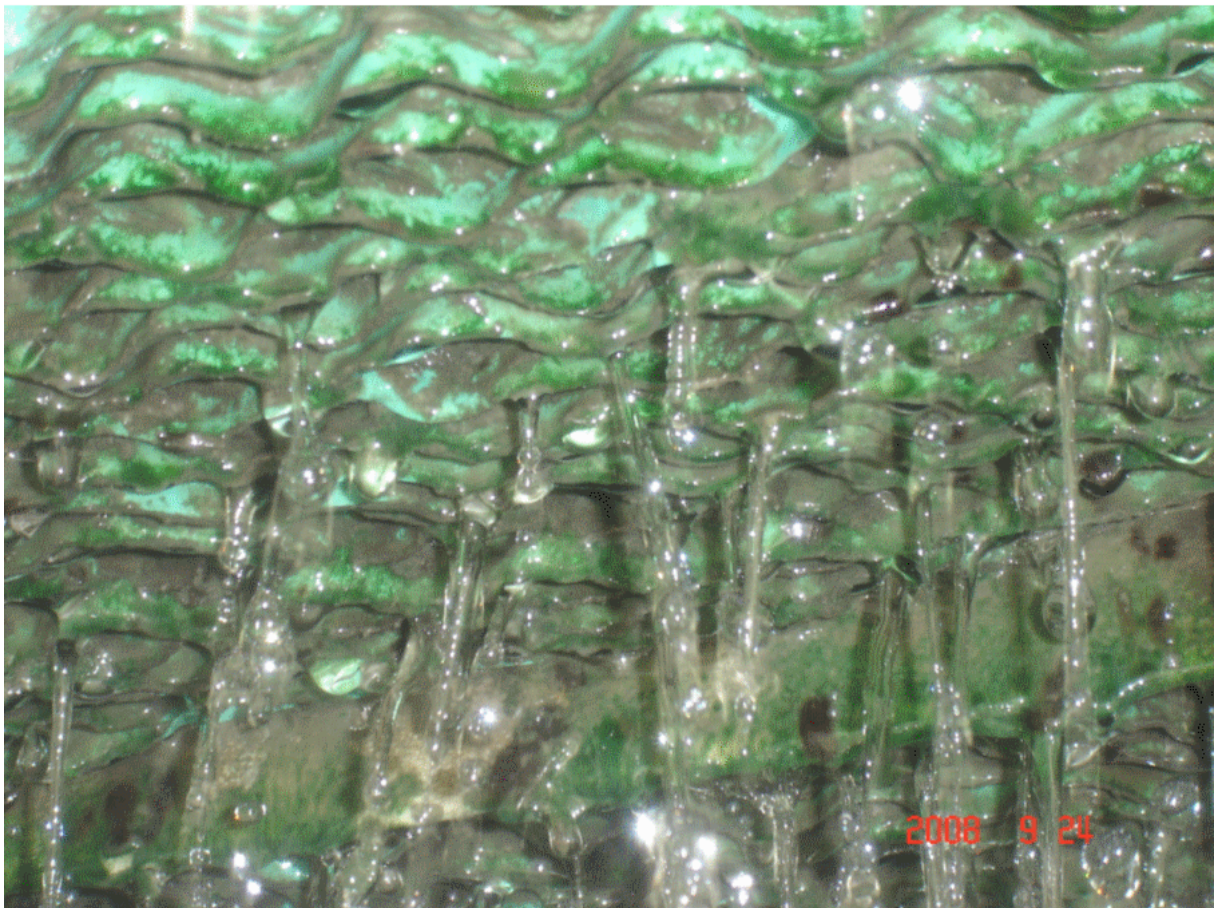
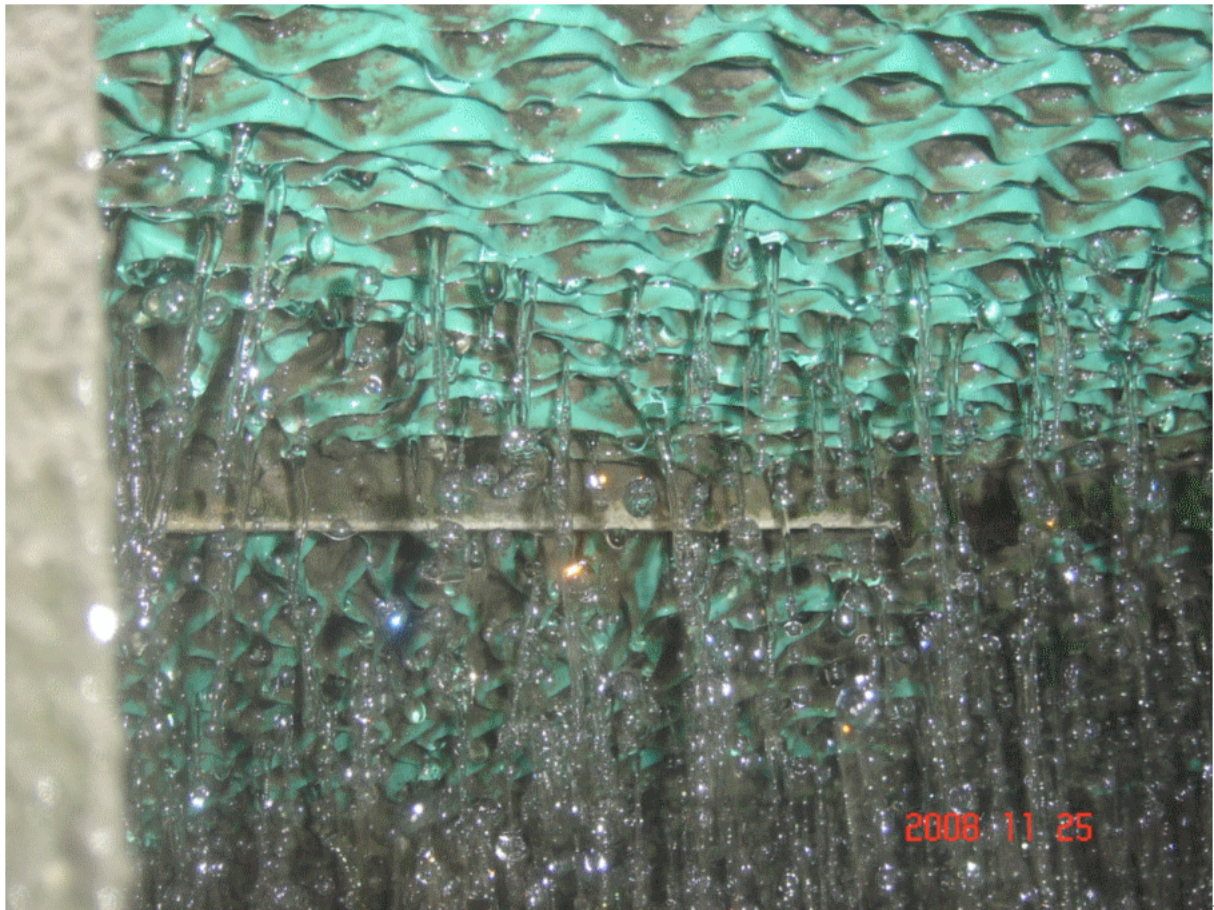


9/9 before use MB ball, the scale and moss are serious which adhered to the material of cooling.

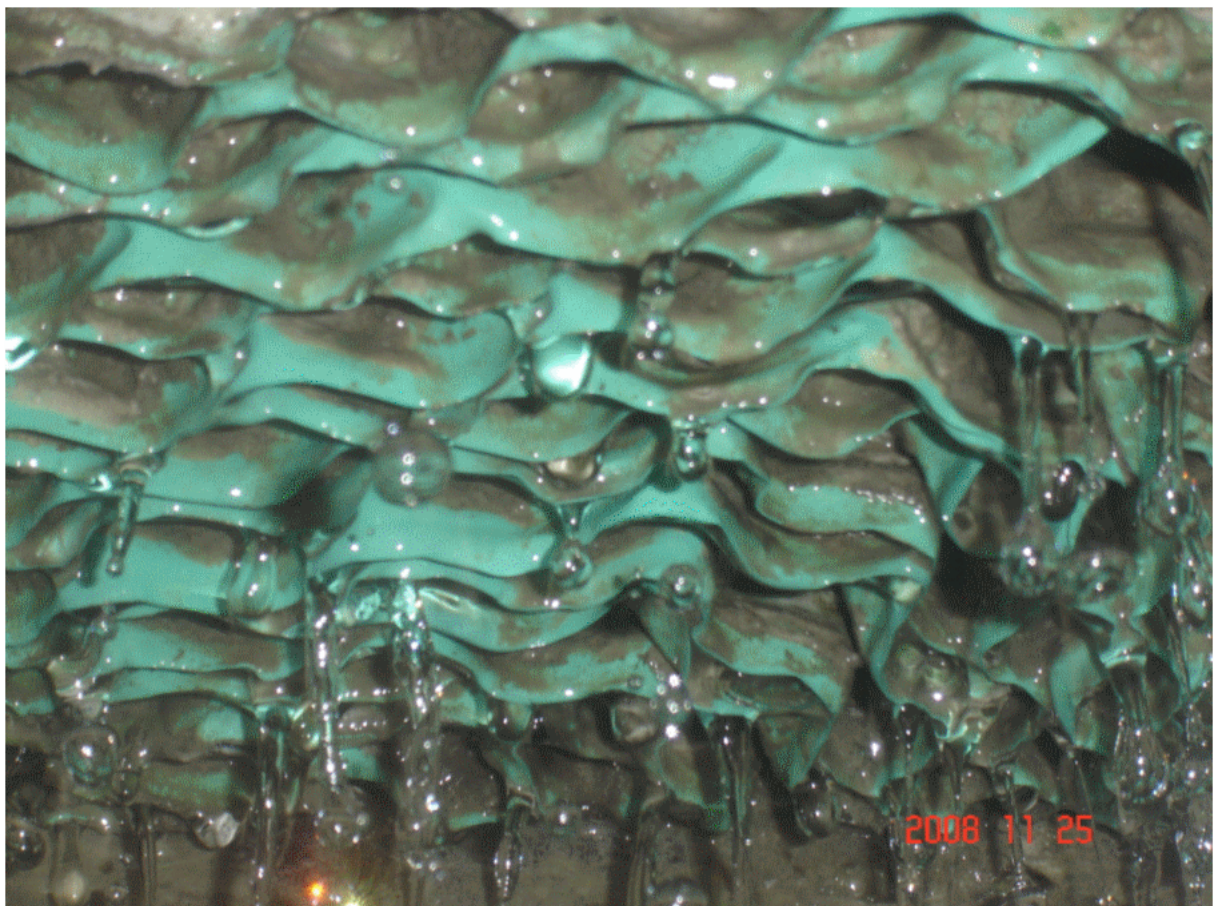


9/24 two weeks later, soften the scale in material of cooling.





11/25 after ten weeks used MB, the scale falls off and the moss to be removed.



11/25 ten weeks later, enlarge the part of photograph.



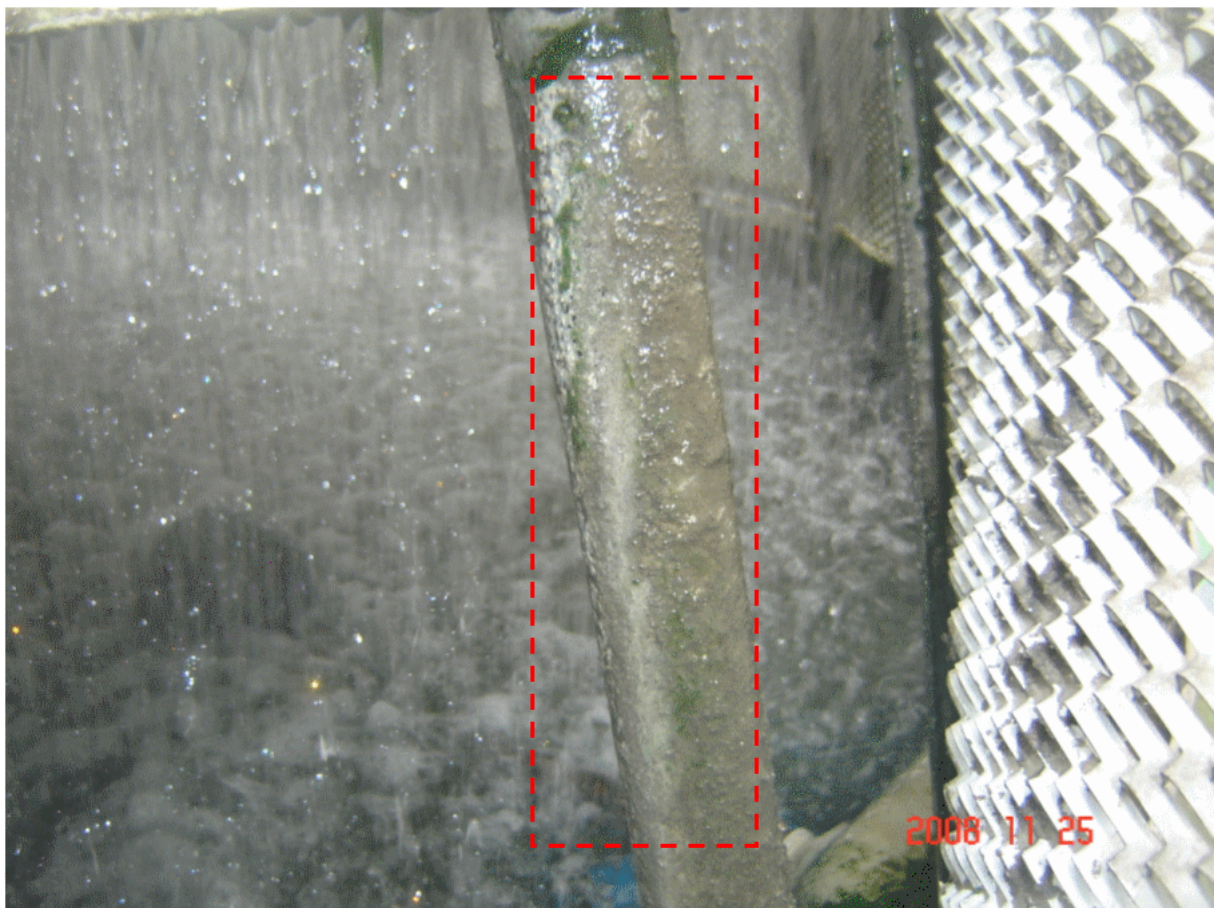


9/9 before use the MB ball, hard scale adhered to the prop stand, it was removed very difficult.



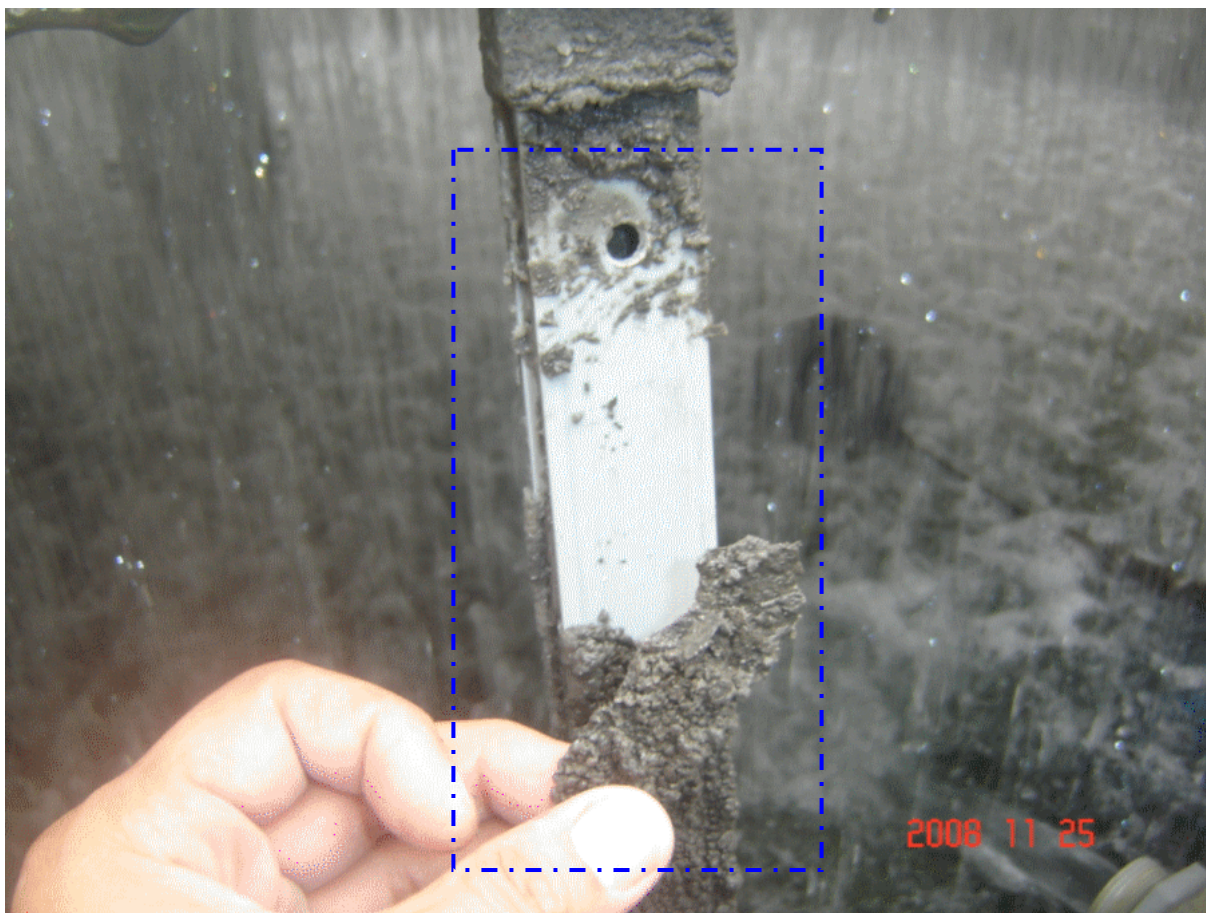


9/24 two weeks later, soften the scale of the prop stand.

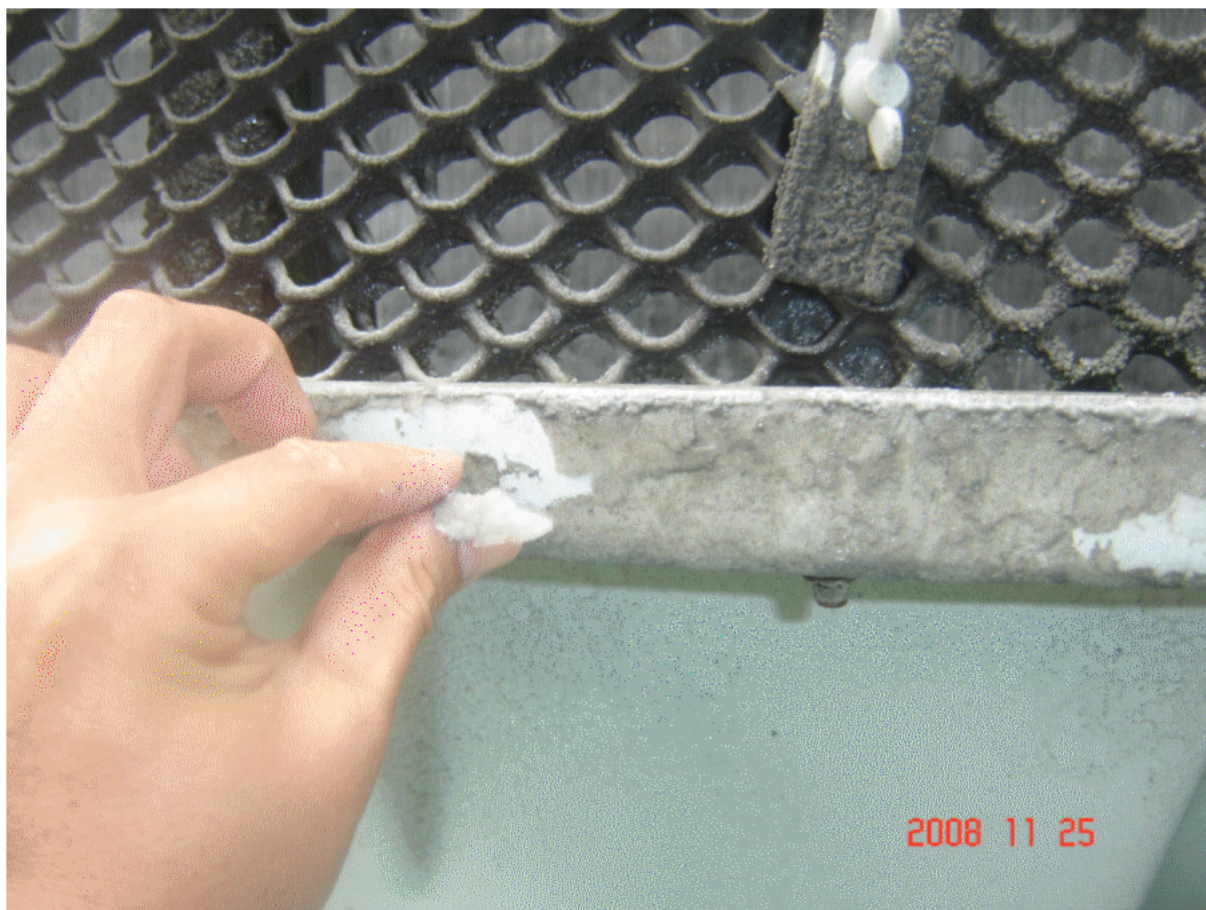


11/25 ten weeks later, the scale of the prop stand had been cleansed.





11/25 ten weeks later, soften the scale of the prop, it was removed so easy.



11/25 ten weeks later, the scale was removed so easy.