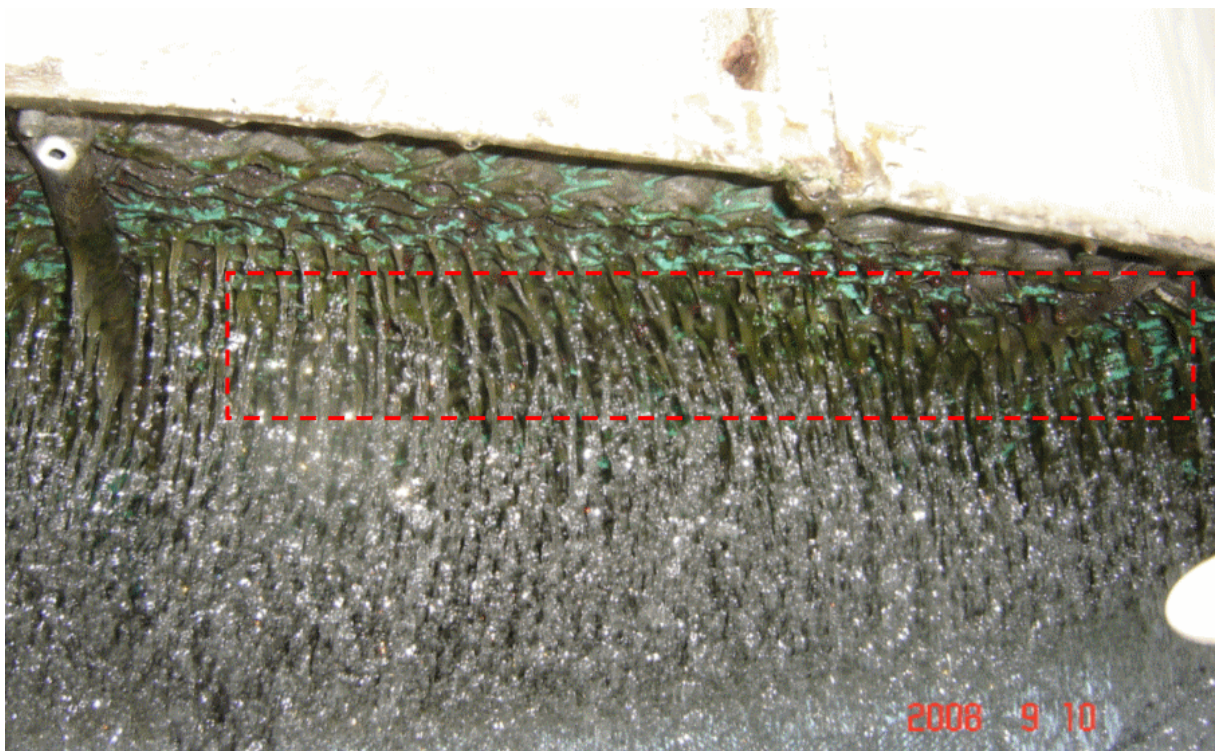
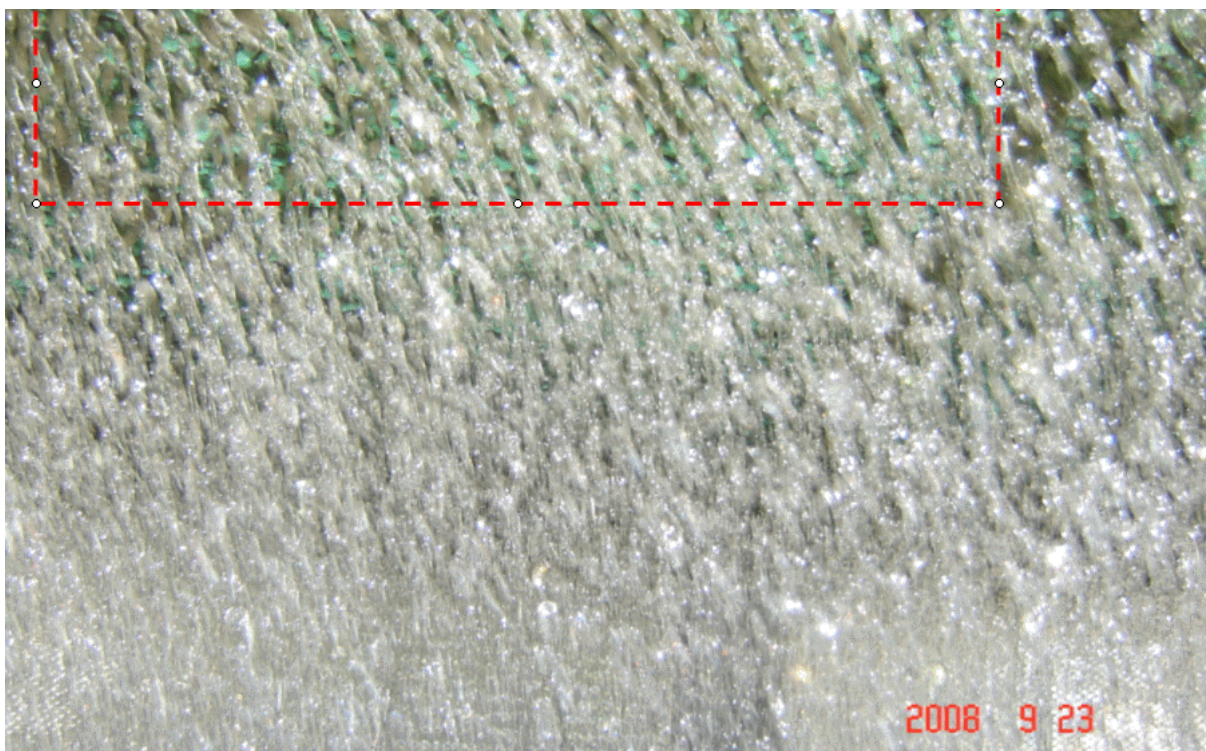


8/27: before use MB ball, there were a lot of scale and moss which adhered to the radiator.

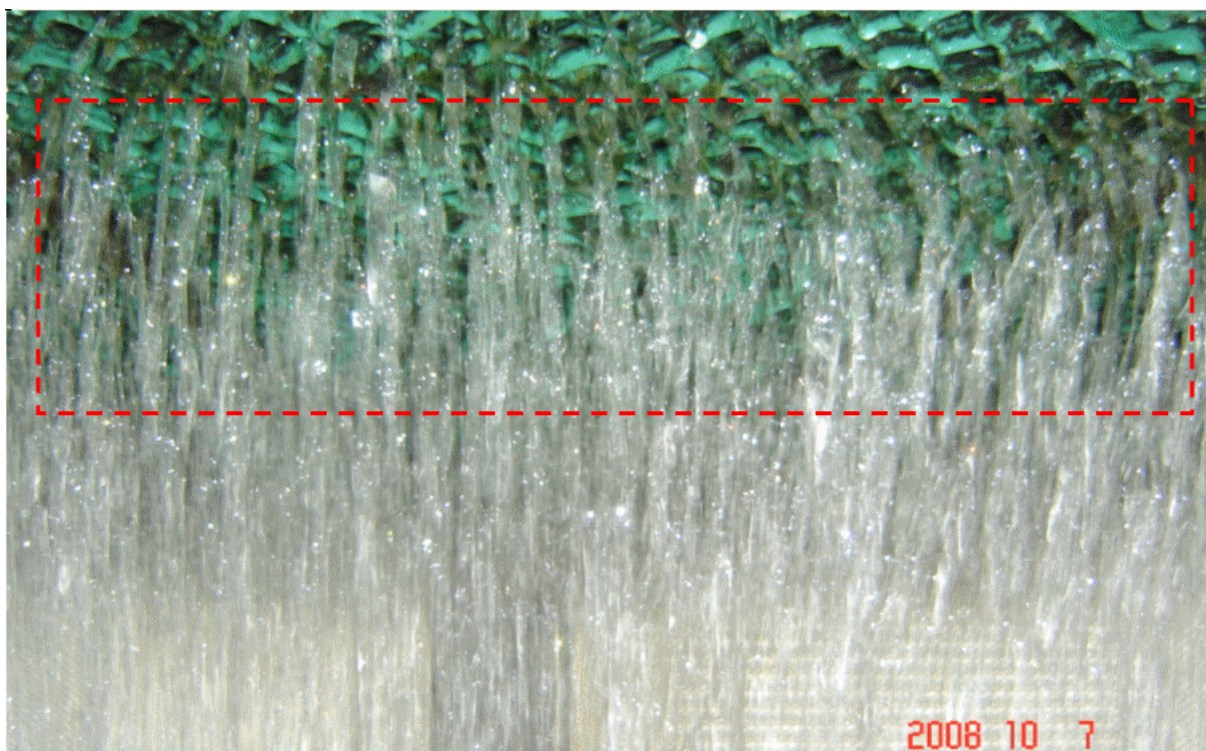


9/10: two weeks later, soften the scale. °





9/23: four weeks later, scale start to fall and growth of moss is controlled.



10/7: six weeks later, scale and moss reduced apparent.





10/7: six weeks later, soften the scale of the prop and removed so easy.