



8/26: Before use MB ball, muddy water covered by huge bubbles.



9/2: One week after MB, water start to be clear and less bubbles.



9/10: 2 weeks later, continually improve the quality of water.



9/16: 3 weeks later, water clear, easy to see the water scales those dropped at the bottom of the water.



10/7: 5 weeks later, water keep clear, large scales drop into the bottom.



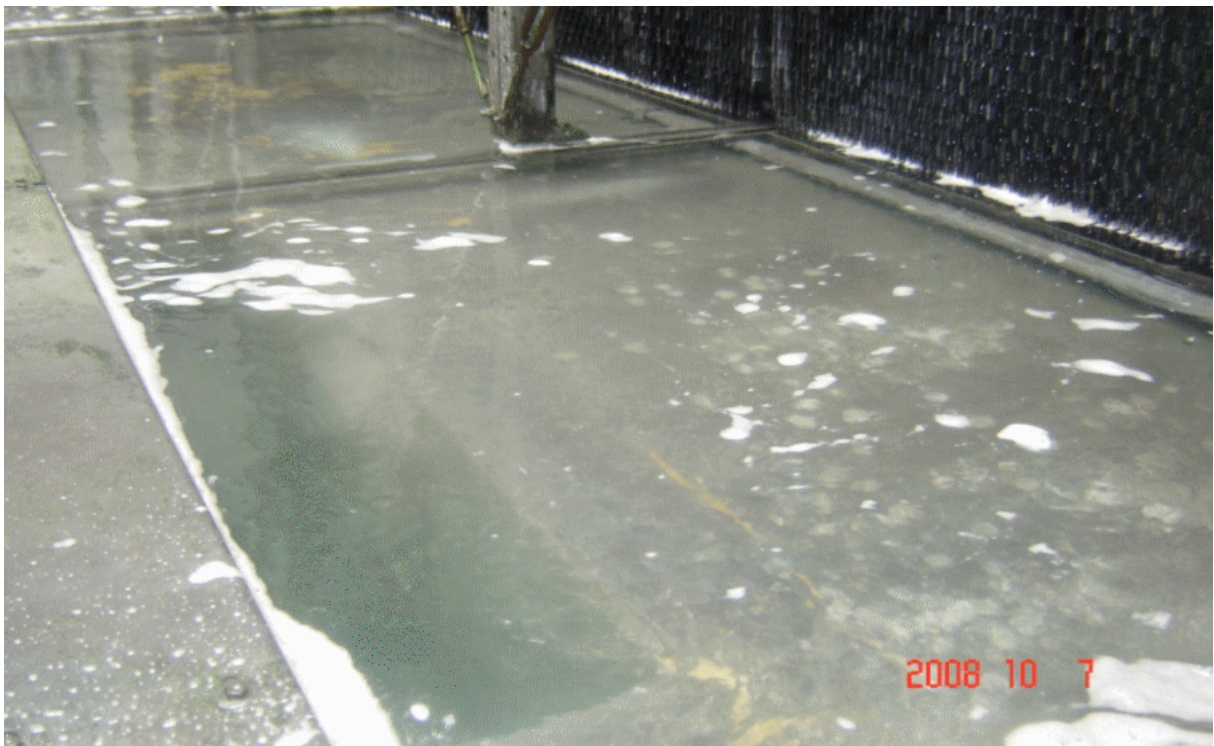
8/26: Enlarge the part of photograph



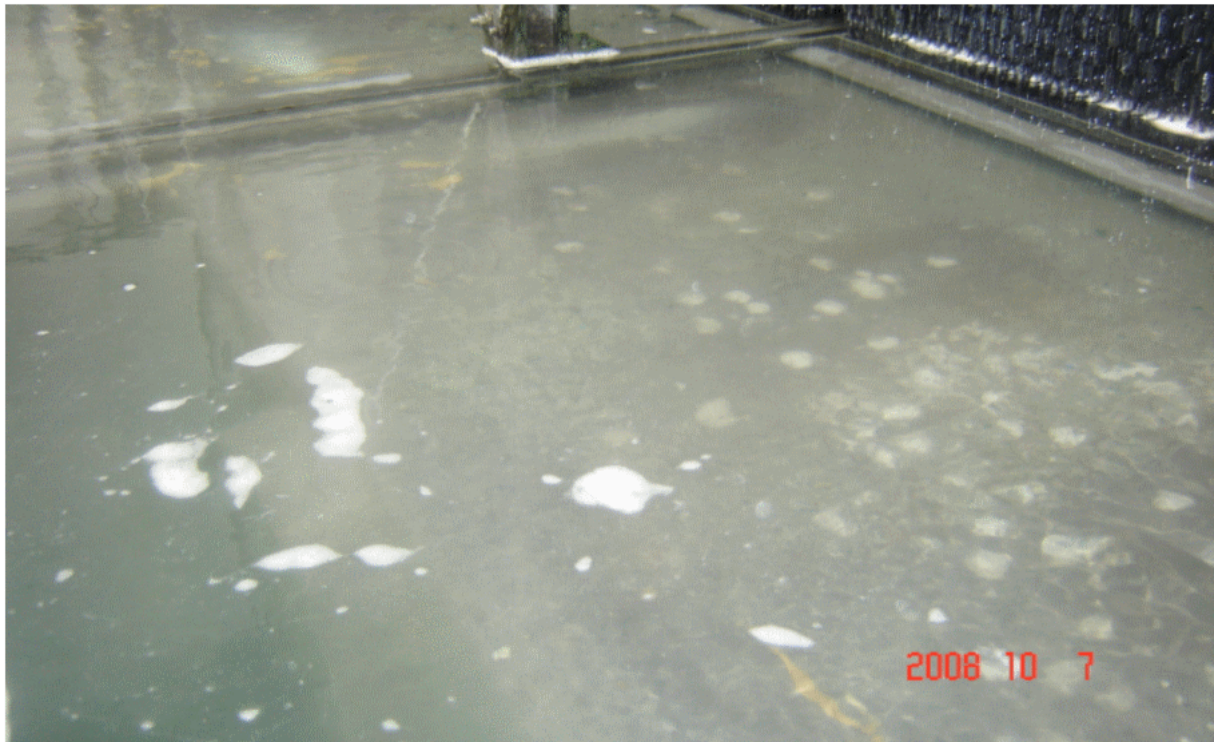
9/2: Enlarge the part of photograph



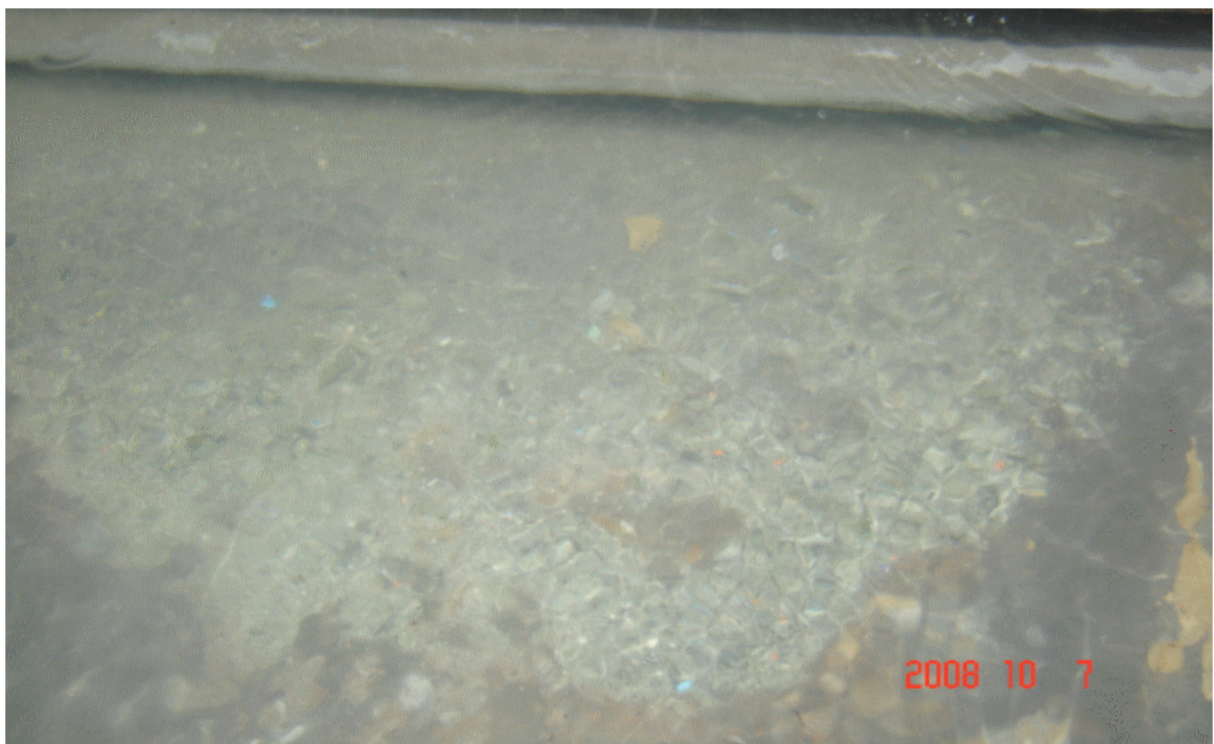
9/16: Enlarge the part of photograph



10/7: Enlarge the part of photograph



10/7: Enlarge the part of photograph of the deposited scales.



10/7: Enlarge the part of photograph of the deposited scales.



10/7: Enlarge the part of photograph of the deposited scales.



8/26: Before use MB ball. (The picture of water divider)



9/2: After 1 week use MB, water in divider start to be clear and less bubble, some scales dropped.



9/16: 3 weeks later, water very clear in the divider, many water scales dropped.



9/16: 3 weeks later, huge scales collected from the water divider.